

SURFBOARDS®



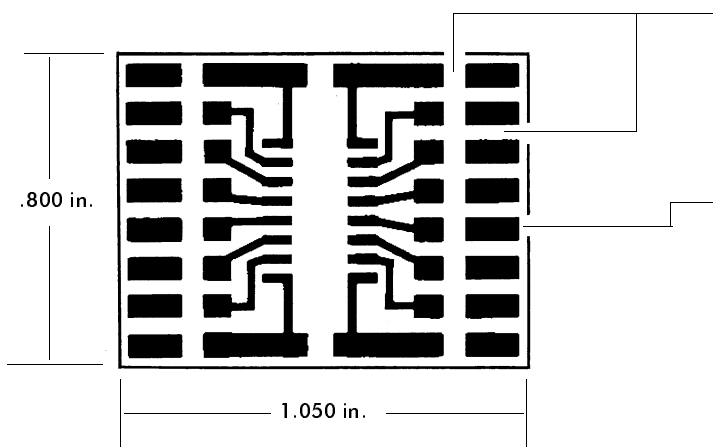
THE BREADBOARDING MEDIUM FOR SURFACE MOUNT™

9000 SERIES FOR I.C.s

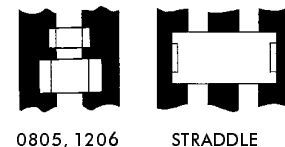
IDS9161 3-9-99

MODEL **9161**

ACCEPTS ONE 14 OR 16-PIN S.O.I.C.
OR TWO 8-PIN SOICs
PERIPHERAL BREADBOARDING AREA



I.C. pins fan out to peripheral part mounting areas capable of accepting several surface mount devices



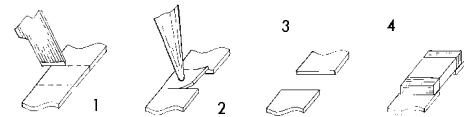
0805, 1206

STRADDLE

FOIL MODIFICATIONS EXPAND VERSATILITY

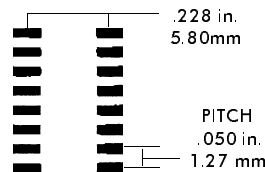
Typical of many Surfboards are large pad areas which may be modified to create additional part mounting zones or expand layout or connection options.

- 1: Score foil with sharp razor to define new zone.
- 2: Apply heat with iron to delaminate foil section.
- 3: New mounting zone has been created.
- 4: Solder component to new mounting zone.



The 9161 provides ample space for a variety of medium density surface mount circuit designs. The peripheral part mounting zones and circuit foils permit the installation of devices in-line with the I.C., or across adjoining circuits. Use foil modifications (see right) and jumpers to configure board to meet your needs. Mounting zones for 2-terminal components accept 0805, 1206, Mini-Melf and A-size Tantalum devices. Diodes, inductors, LED's and other devices within size range above can be mounted as well.

I.C. FOOTPRINT
accepts one 14 or
16-pin SOIC,
or two 8-pin SOICs.



NEED MORE SPACE ?
SEE MODEL
9162

BOARD SPECIFICATIONS

BOARD MATERIAL: .031 +/- .005 In. Thick G-10 FR-4 Glass Epoxy or equivalent.
CIRCUITS: 1oz Copper with solder coated pads.
TOLERANCES: Given in inches
Board Size +/- .020 / OAL +/- .040
Circuit pattern/position +/- .005

Copyright 1997, 1999 by Capital Advanced Technologies, Inc. All rights reserved. Surfboards are a registered trademark of Capital Advanced technologies, Inc. All other trademarks or registered trademarks are property of their respective owners. Availability, specifications, and prices are subject to change without notice. All information given is believed to be accurate but is not guaranteed. The user of information given or products represented by such information is responsible for determining the suitability of said information or products for a given purpose.

CAPITAL ADVANCED TECHNOLOGIES, INC.

CAROL STREAM, ILLINOIS, USA.

PHONE 630-690-1696 WWW.CapitalAdvanced.Com FAX-ON-DEMAND 630-690-2865